

# Columbus Portfolio Range

## Fund Fact Sheet

### CRF Balanced

December 2020

<b>Launch date</b>	<b>Fund size</b>
June 2008	R 482.3 million

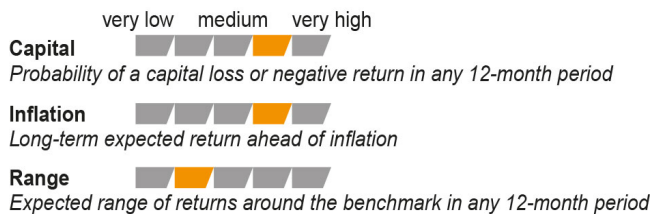
#### Fund description

Combined - Multi asset class - Discretionary

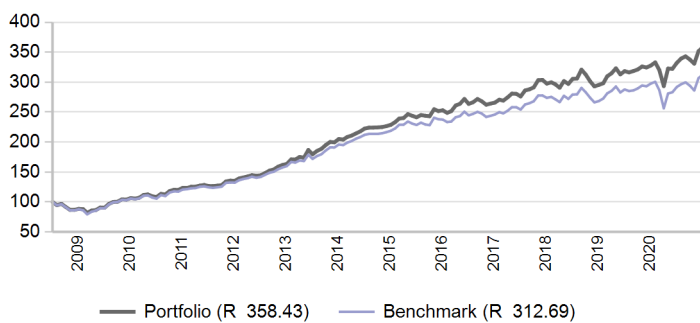
#### Portfolio description

Performer is a moderate- to high-risk, multi-asset portfolio that aims to outperform the Alexander Forbes Investable Global Large Manager Watch™ Median. In addition, the portfolio targets CPI inflation-beating returns of CPI +5% over rolling five-year periods. The portfolio's asset allocation is dynamic to allow it to competitively participate in market recoveries and protect in falling markets. The portfolio blends diversified strategies including alternatives, both locally and offshore, to manage risk and enhance performance potential by capturing different sources of returns.

#### Risk Profile



#### Value of R 100 invested since inception



#### Manager weightings

Manager	Weight
Performer International	28.1%
Prudential Domestic Balanced	18.0%
Foord Domestic Balanced	16.2%
Allan Gray Domestic Balanced	14.5%
Ninety One Domestic Balanced	14.3%
Performer Domestic Hedge Fund	4.6%
Private Markets SA	2.5%
Performer Africa	1.2%
Banker	0.6%
Transition	0.1%
<b>Total</b>	<b>100.0%</b>

#### Risk stats over 3 Years

	Portfolio	Benchmark
Annualised standard deviation	11.1%	11.8%
Sharpe ratio	0.0	-0.1
Maximum drawdown	11.9%	14.8%

#### Benchmark allocation

Combined asset class	Benchmark	Allocation
Balanced	AF Investable Global LMW Median	100.0%
<b>Total</b>		<b>100.0%</b>

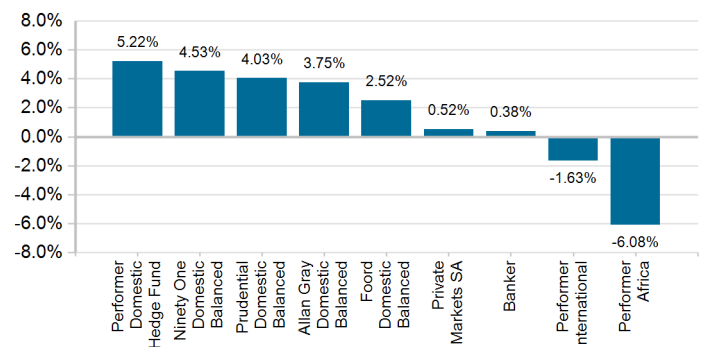
#### Market summary

	1 Month	3 Months	1 Year	3 Years
FTSE/JSE All Share	4.24%	9.75%	7.00%	3.12%
FTSE/JSE SWIX	3.95%	9.91%	2.61%	-0.31%
FTSE/JSE Capped SWIX ALSI	5.47%	11.48%	0.58%	-1.48%
FTSE/JSE SA Property	13.68%	22.19%	-34.49%	-20.68%
All Bond Index	2.44%	6.71%	8.65%	8.88%
STeFI Composite index	0.31%	0.97%	5.39%	6.64%
MSCI AC World	-0.64%	0.78%	21.96%	16.65%
FTSE WGBI	-3.75%	-9.69%	15.51%	11.24%

#### Portfolio returns

	Portfolio	Benchmark
1 Month	1.91%	1.96%
3 Months	6.10%	6.28%
YTD	9.37%	5.07%
1 Year	9.37%	5.07%
3 Years	6.40%	4.53%
5 Years	7.21%	5.65%
10 Years	11.25%	9.99%
Since Inception	10.68%	9.48%

#### Underlying returns (1 month to December 2020)



Positive months	61.1%	63.9%
-----------------	-------	-------

Effective asset allocation exposure

Local	70.8%
Equity Excluding Property	41.6%
Basic Materials	10.6%
Consumer Services	10.2%
Financials	9.5%
Consumer Goods	5.1%
Industrials	1.8%
Healthcare	1.5%
Technology	1.2%
Telecommunications	1.2%
Other Securities	0.6%
Property	1.7%
Bonds	16.9%
< 12 Months	0.3%
1 - 3 Years	0.8%
3 - 7 Years	5.5%
7 - 12 Years	3.4%
12+ Years	7.0%
Cash	2.9%
Commodities	1.4%
Alternatives	6.2%
Global	28.0%
Equity Excluding Property	23.8%
Property	1.3%
Bonds	1.9%
Cash	0.9%
Commodities	0.0%
Balanced	0.0%
Africa	1.2%
Equity Excluding Property	0.9%
Property	0.0%
Bonds	0.0%
Cash	0.0%
Commodities	0.0%
Alternatives	0.3%

Top 10 equity holdings

Holding	%
NASPERS	5.1%
STANDARD BANK GROUP	2.2%
BRITISH AMERICAN TOBACCO PLC	2.2%
FIRSTRAND LIMITED	2.1%
BHP GROUP PLC	1.8%
ANGLO AMERICAN	1.7%
IMPALA PLATINUM HLDS	1.6%
PROSUS	1.2%
COMPAGNIE FINANCIERE RICHEMONT AG	1.1%
ANHEUSER-BUSCH INBEV	1.0%
% of total portfolio	19.9%

Top 10 fixed interest issuers

Issuer	%
SOUTH AFRICA (REPUBLIC OF)	13.1%
ESKOM HOLDINGS SOC LTD	0.7%
FIRSTRAND BANK LIMITED	0.6%
MERCER GLOBAL INVESTMENTS MANAGEMENT LTD	0.5%
STANDARD BANK GROUP LTD	0.4%
COMMUNITY GROWTH MANAGEMENT COMPANY LTD	0.2%
ISHARES PLC	0.2%
INVESTEC BANK LIMITED	0.2%
YIELDX	0.2%
NEDBANK GROUP LTD	0.2%
% of total portfolio	16.3%

Fees

Period (Annualised, rolling one-year period): 01 Nov 2019 to 31 Oct 2020

Average annual service charge (incl VAT)	0.45%
Underlying manager performance fees expense	0.02%
Underlying global manager expense	0.09%
Underlying fund expense	0.19%
Other expenses	0.01%
Total Expense Ratio (TER)	0.76%
Transaction Costs (TC)	0.06%
Total Investment Charges (TER + TC)	0.83%

---

## FAIS notice and disclaimer

Alexander Forbes Investments Limited is a licensed financial services provider in terms of Section 8 of the Financial Advisory and Intermediary Services Act, 37 of 2002, as amended, FAIS licence number 711. This information is not advice as defined and contemplated in the Financial Advisory and Intermediary Services Act, 37 of 2002, as amended. Past investment returns are not indicative of future returns. This product is not guaranteed. Please be advised that there may be representatives acting under supervision. Company Registration Number: 1997/000595/06. Pension Fund Administrator No.24/217. Long Term Insurance Act No. 00018/001. Postal address: P.O. Box 786055, Sandton 2146. Physical Address: 115 West Street, Sandown, 2196. Telephone number: +27 (11) 505 6000. The complaints policy and conflict of interest management policy can be found on the Alexander Forbes Investments website: <http://www.alexanderforbesinvestments.co.za>.

---

## Notes

1. Market data is sourced from Datastream. The FTSE/JSE Africa Index Series is calculated by FTSE International Limited ("FTSE") in conjunction with the JSE Securities Exchange South Africa ("JSE") in accordance with standard criteria. The FTSE/JSE Africa Index Series is the proprietary information of FTSE and the JSE. All copyright subsisting in the FTSE/JSE Africa Index Series index values and constituent lists vests in FTSE and the JSE jointly. All their rights are reserved.
2. All returns are before deduction of Alexander Forbes Investments' policy fees and performance fees, but net of other expenses. Returns for periods exceeding one year are annualized and all returns are quoted in Rands. Past investment returns are not indicative of future returns.
3. Performance fees are paid directly to the manager for performance in excess of a pre-defined hurdle. Policy fees are payable directly to Alexander Forbes Investments. The institutional fee is based on a sliding fee scale and is dependent on the size of assets invested in the portfolio. Clients are referred to our website for more information.
4. Global manager cost is the actual cost paid directly to the asset manager to manage the offshore assets. It represents an annualized number and is separate from the Alexander Forbes Investments policy fee.
5. All holdings information is based on latest available data.
6. There may be differences in totals due to rounding.